

BBS400-2

Blackbody calibration source

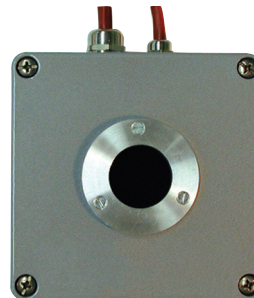
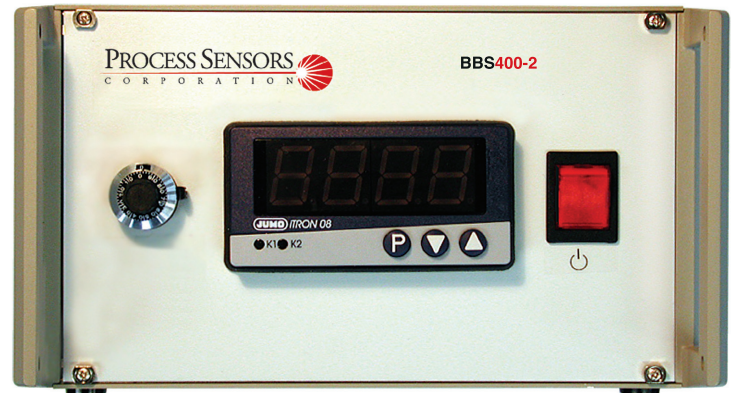
Temperature range from 50° to 400° C

The PSC Model BBS400-2 is ideal for verification and calibration of non-contact infrared thermometers, infrared detectors and imaging systems.

The compact, 2 piece design of this blackbody calibration source offers portability for calibration of on-line, fixed mounted infrared temperature sensors as well as calibration for infrared imaging detectors in automated calibration processes.

The Blackbody source emitter provides a large 1.18" (30mm) aperture, adequate for most portable infrared temperature devices, is stable and offers high emissivity & uniformity.

An external pyro. correction adjustment, allows the user to verify an on-line pyrometer's stability & repeatability due to a dirty sensor lens, without having to remove the sensor from its fixed mounted process installation location.



Blackbody Source Emitter

TECHNICAL SPECIFICATIONS FOR BBS400-2

CHARACTERISTICS	PERFORMANCE
Temperature range	50°C to 400°C
Aperture	1.18" (30mm)
Emissivity	0.96 ± 0.01
Measurement uncertainty	± 2° C
Short term stability	± 0.5° C
Temperature sensor	Pt100
Method of control	PID controller
Display Resolution	0.1° C or 1° C configurable
Status output	Relay
Set point activation	Logic input for floating contact
Dimensions: source emitter	4.72" x 4.72" x 3.54"
Dimensions: controller unit	9.25" x 5.12" x 12.2"
Weight: source emitter/controller	2.20 lb./6.61 lb.
Power Requirements	115/230 VAC, 50/60 Hz, 200w (switchable)
Options controller unit	Front panel cover with lock, Grips for 19" rack mount